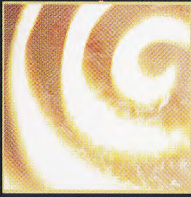


THE CARDIFF



Elevation C

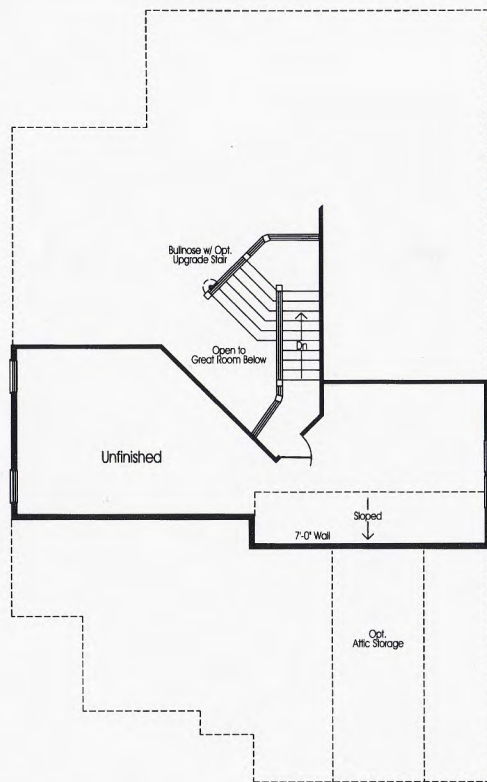
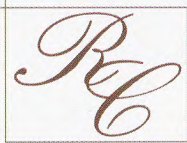
EXCEPTIONAL DESIGN  ENDURING CONSTRUCTION  EXQUISITE DETAIL



R Y A N
CLASSICS

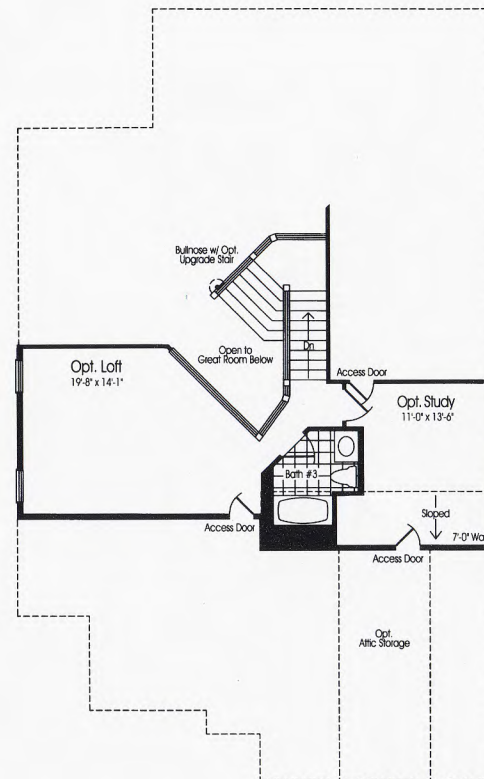
THE CARDIFF

UPPER LEVEL



Note: Windows & Rooms
May Vary w/ Elevators

Opt. Second Floor - Unfinished



Note: Windows & Rooms
May Vary w/ Elevators

Opt. Second Floor w/ Opt. Loft & Opt. Study

THE CARDIFF

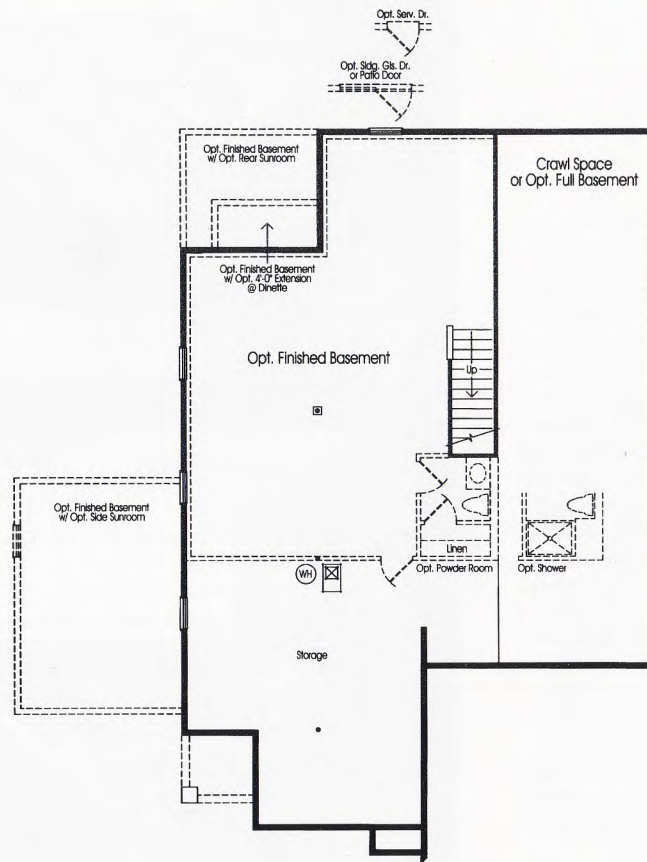
MAIN LEVEL



Note: Windows & Rooms May Vary w/ Elevations

THE CARDIFF

LOWER LEVEL





Elevation B



Elevation A

THE CARDIFF

The Cardiff is one of Ryan Homes most versatile ranch homestyles. Every amenity is located on the first floor for the ultimate in convenience and, with the numerous options available, you can create your dream house. The foyer, with its tray ceiling, opens into the formal dining room, separated by ornate columns, and looks into the enormous great room with its sloped ceiling and optional two-sided gas fireplace. To the right of the foyer is the elegant formal living room. The eat-in, gourmet kitchen is a cook's paradise. Add optional side and rear sunrooms for ambience. The luxurious owner's suite with a tray ceiling, enormous walk-in closet and dual vanities in the bath can be upgraded with a delightful soaking tub and separate shower. And, of course, the laundry is conveniently located near the bedroom. The upper level comes standard with a huge attic storage space, but you can upgrade it with a study, a bath, and a loft. You'll still have plenty of storage space! In many locations, you can complete your home with an enhanced lower level that can include an optional full bath. The Cardiff is available with a two-car garage with the option for side entry.

Regardless of which model you select, our trained professionals will work with you on every step of the process to create the perfect home.

